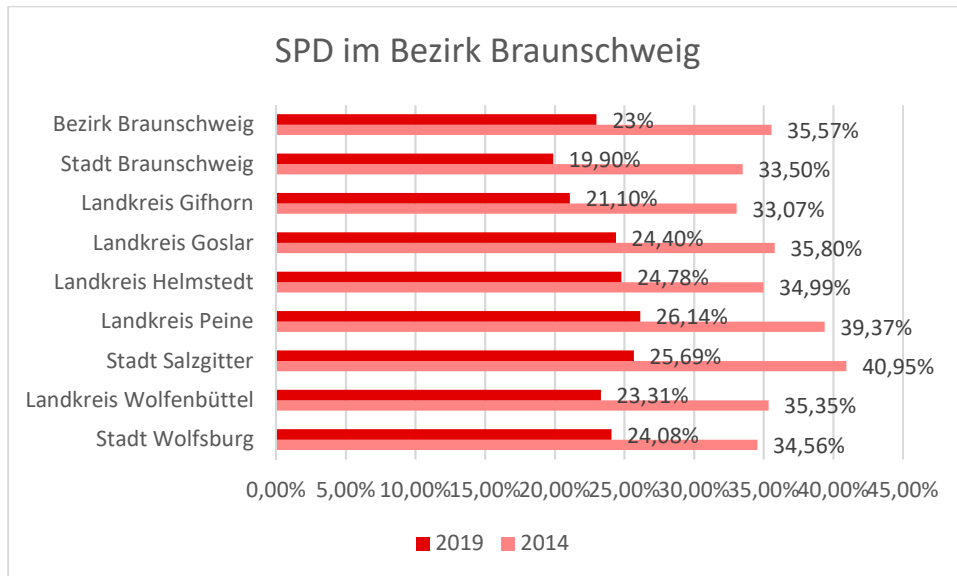




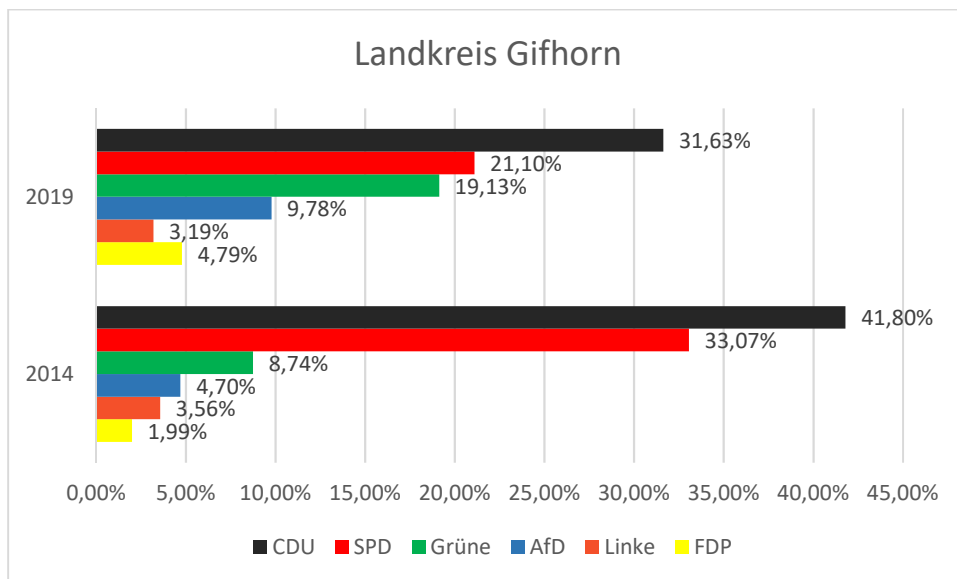
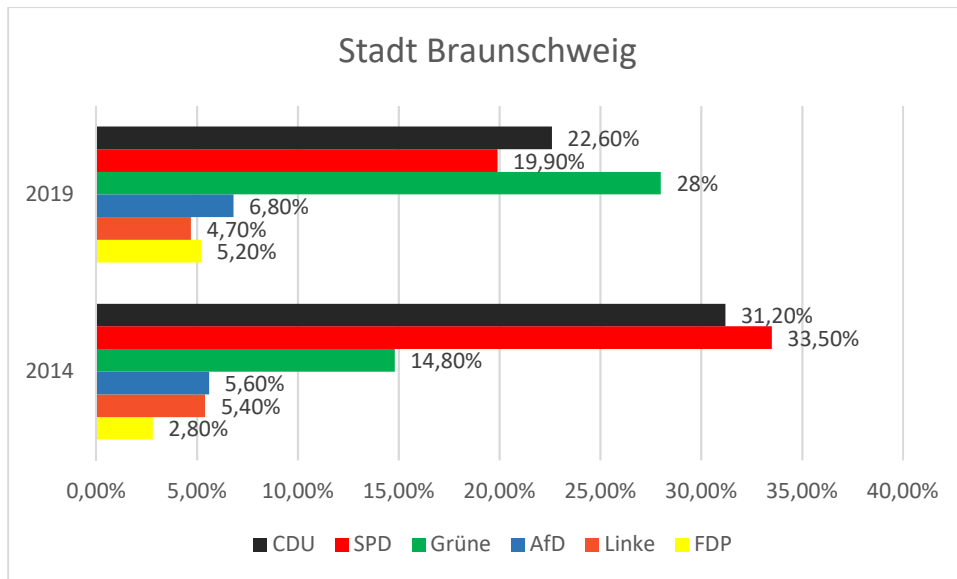
Ergebnisse
Europawahl 2019

Ergebnisse der Europawahlen 2014/19 im Bezirk Braunschweig

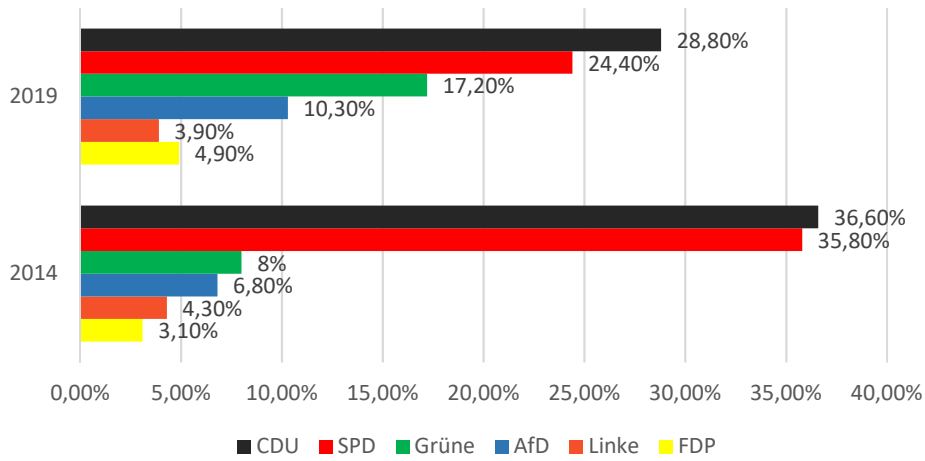
A) SPD im Bezirk Braunschweig



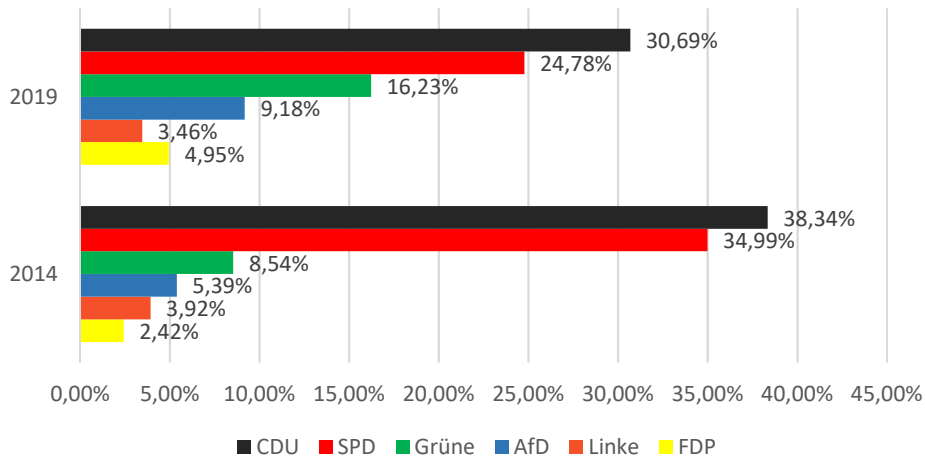
B) Alle Parteien pro Unterbezirk



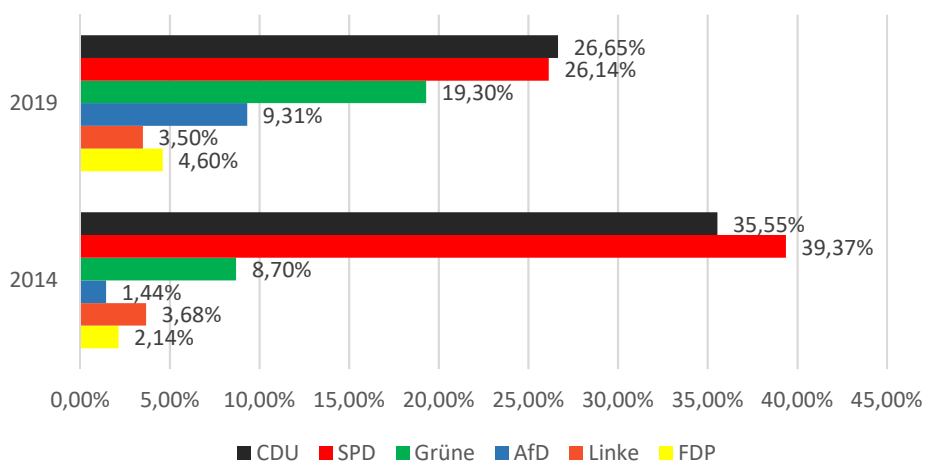
Landkreis Goslar



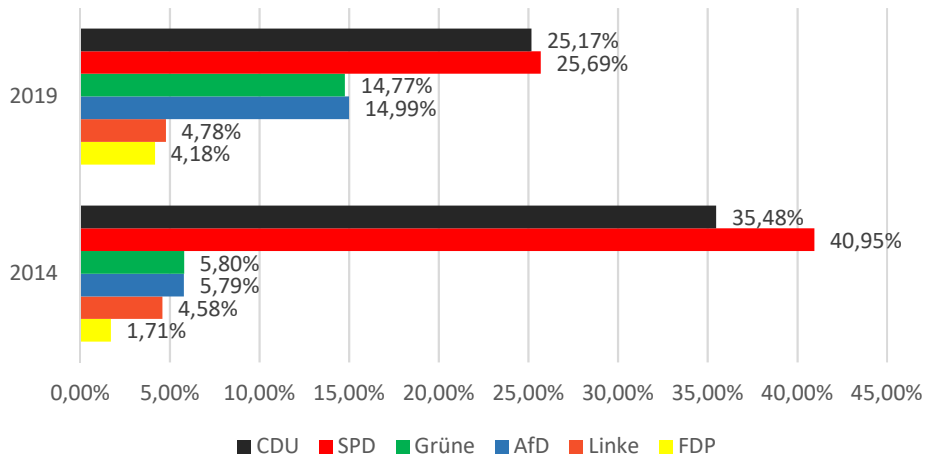
Landkreis Helmstedt



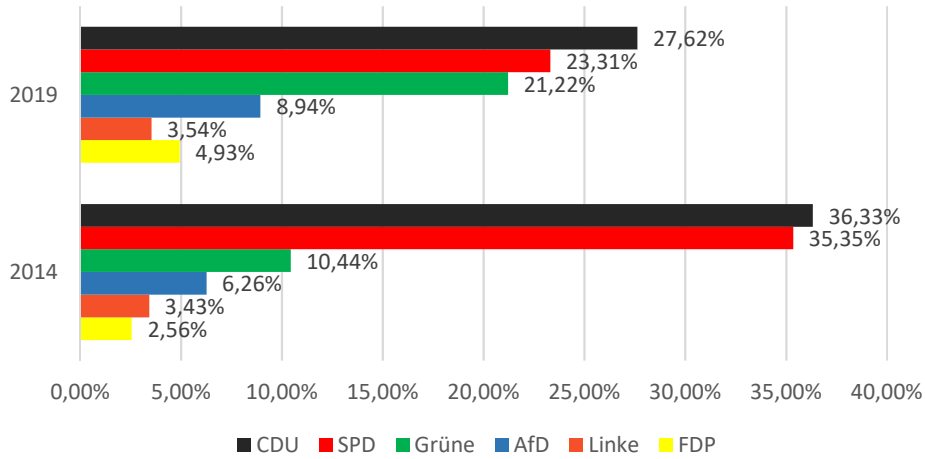
Landkreis Peine



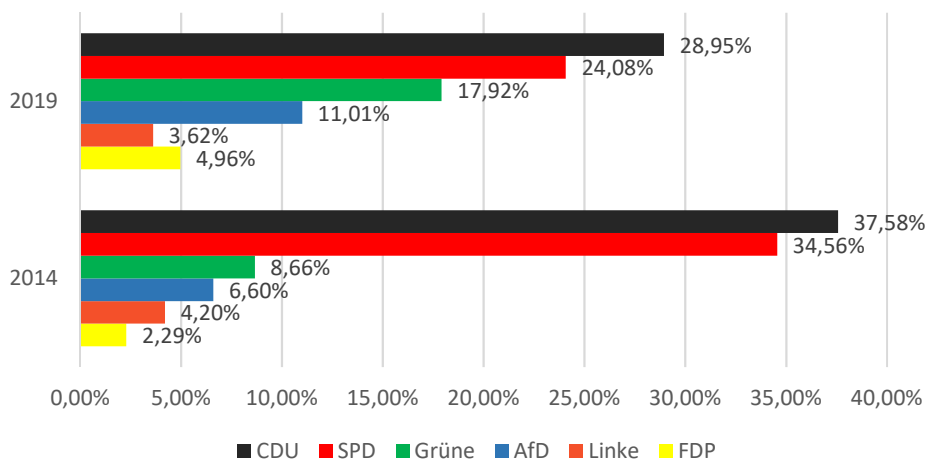
Stadt Salzgitter



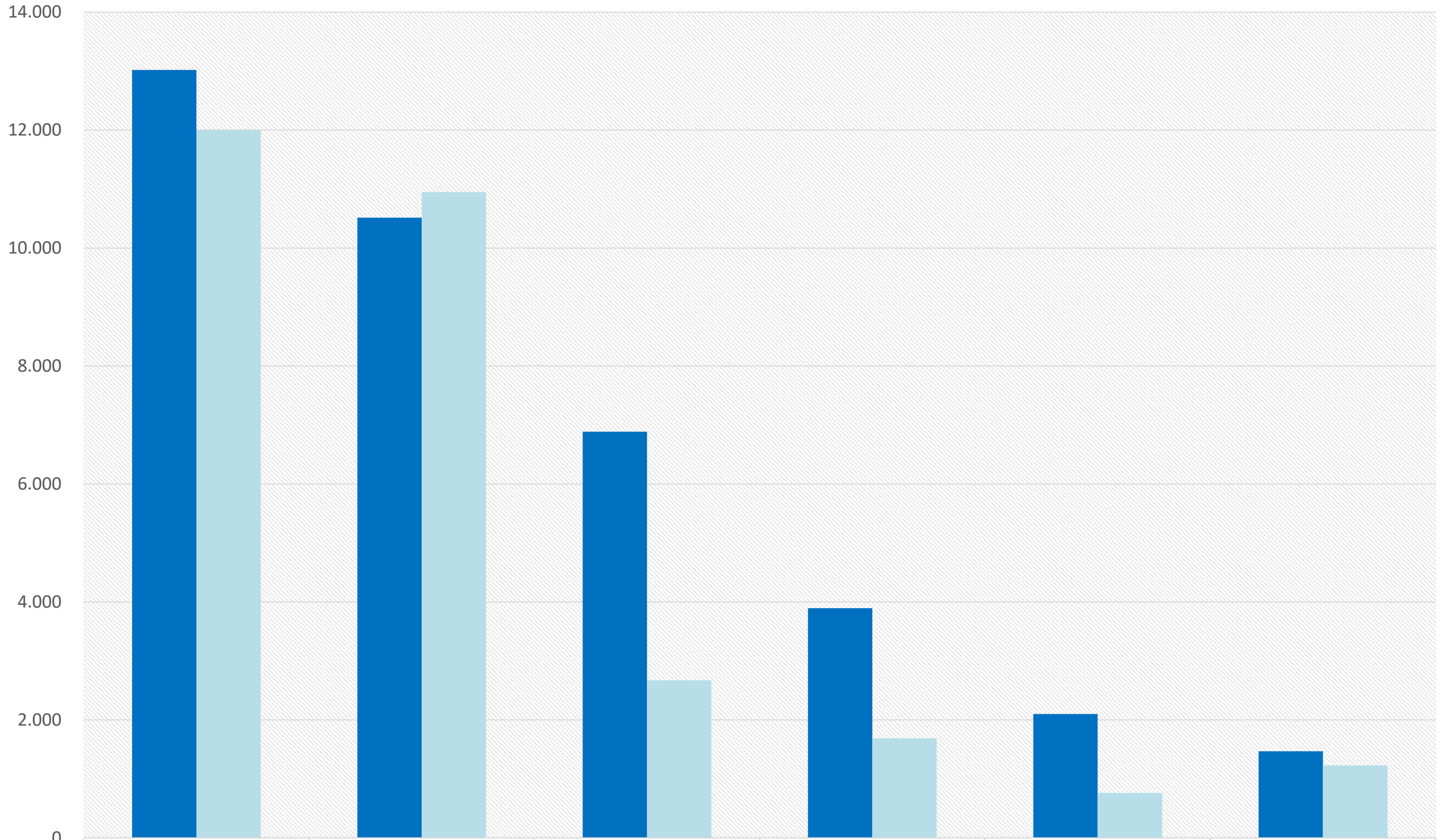
Landkreis Wolfenbüttel



Stadt Wolfsburg



Stimmenanteil Landkreis Helmstedt



■ 2019

■ 2014

CDU

SPD

GRÜNE

AfD

FDP

DIE LINKE

13.022

10.514

6.885

3.895

2.101

1.470

11.999

10.950

2.673

1.688

760

1.229

		insgesamt	ungültig	gültig	CDU	SPD	GRÜNE	AID	FDP	DIE LINKE	Die PARTEI	Tierschutz-partei	FAMILIE	PIRATEN	FREIE WÄHLER	NPD	ÖDP	Volt	TIER-SCHUTZ hier!	Graue Panther	PARTEI FÜR DIE TIERE	Demokratie in Europa	Gesundheits-forschung	Tierschutz-allianz	Die Grauen	LKR	Volksab-stimmung	Die Huma-nisten	Bündnis C	DIE FRAUEN	BP	LIEBE	BGE	BIG	ÖkoLinX	MENSCH-LICHE WELT	DIE RECHTE	DIE DIREKTE!	DKP	NL	DIE VIO-LETTEN	MLPD	SGP	Ill. Weg			
	Nr. / Name	B	C	D	D 1	D 2	D 3	D 4	D 6	D 5	D 10	D 8	D 11	D 7	D 12	D 9	D 14	D 40	D 19	D 32	D 38	D 25	D 39	D 20	D 27	D 33	D 13	D 37	D 21	D 31	D 16	D 30	D 23	D 22	D 36	D 34	D 28	D 24	D 15	D 35	D 29	D 17	D 18	D 26			
51	Gemeinde Lehre																																														
51	01 - Lehre	604	2	602	167	123	135	54	39	20	11	11	9	6	1	1	1	2	0	4	3	1	1	0	2	0	0	0	2	1	2	2	1	0	2	2	0	1	0	0	0	0	0	0	0	0	
52	02 - Lehre	498	4	494	147	109	109	40	25	8	9	5	6	8	4	0	4	3	1	1	0	1	2	1	0	1	1	0	3	0	0	1	0	2	1	0	0	0	0	1	0	1	0	0	0		
53	03 - Lehre	503	8	495	136	104	120	40	21	16	15	0	3	4	3	1	4	6	8	3	1	1	2	0	0	0	1	0	0	0	0	0	2	1	1	0	0	0	0	0	1	1	0	0	0		
54	04 - Wendhausen	579	5	574	172	114	137	42	32	12	17	8	10	4	3	0	3	1	3	1	0	0	0	1	1	1	1	6	1	1	1	0	0	0	2	0	0	0	0	0	0	0	0	0	0		
55	05 - Essehof	188	2	186	59	45	27	21	11	6	5	2	1	1	3	0	0	0	0	0	1	1	0	0	0	0	1	0	2	0	0	0	0	0	0	0	0	0	0	0	0	0	0	0	0		
56	06 - Flechtorf	599	3	596	153	162	127	48	17	31	11	11	3	8	5	0	2	0	2	0	0	4	2	0	0	0	0	3	0	1	0	0	0	0	0	2	1	2	0	1	0	0	0	0	0		
57	07 - Flechtorf	643	1	642	194	126	134	55	24	28	14	9	10	5	10	3	6	4	1	0	3	0	0	1	3	5	0	0	0	0	1	1	0	0	1	0	1	0	0	1	1	0	1	0	0		
58	08 - Essenrode	572	2	570	140	152	139	42	23	12	14	19	2	4	5	0	1	1	1	0	0	5	1	0	0	3	1	0	1	0	1	1	0	0	1	0	0	0	0	0	1	0	0	0	0		
59	09 - Groß Brunsrode	315	0	315	99	65	82	13	14	18	4	3	0	3	2	0	2	4	0	0	0	0	0	1	0	1	1	0	1	0	2	0	0	0	0	0	0	0	0	0	0	0	0	0	0	0	
60	10 - Klein Brunsrode	173	0	173	48	25	40	25	10	7	1	3	3	1	0	2	4	0	0	0	0	0	1	2	0	0	0	0	0	0	0	0	0	0	0	0	0	0	0	0	1	0	0	0	0		
61	11 - Beienrode	249	1	248	91	61	43	9	11	5	6	7	1	3	2	0	1	0	3	1	0	2	0	1	0	0	0	0	0	0	0	0	0	0	1	0	0	0	0	0	0	0	0	0	0		
	Zwischensumme Gemeinde Lehre	4.923	28	4.895	1.406	1.086	1.093	389	227	163	107	78	48	47	38	7	28	21	19	10	8	15	9	6	6	8	8	2	17	3	7	6	4	3	6	5	3	2	2	4	3	1	0	0			
62	Briefwahl 850 (WB 01-05)	755	0	755	267	152	150	63	46	17	13	8	4	3	3	0	0	1	2	3	0	2	3	1	0	2	6	0	3	1	3	0	0	0	0	0	0	0	0	0	0	1	1	0	0		
63	Briefwahl 851 (WB 06-11)	645	4	641	184	173	134	48	30	14	12	9	4	5	3	1	2	1	0	4	1	0	2	1	0	1	3	1	0	0	1	2	1	2	0	1	0	0	0	0	0	0	0	0	1	0	
	Zwischensumme Briefwahl Gem. Lehre	1.400	4	1.396	451	325	284	111	76	31	25	17	8	8	6	1	2	2	2	7	1	2	5	2	0	3	9	1	3	1	4	2	1	2	0	1	0	0	0	0	1	1	0	1			
	Summe Gemeinde Lehre	6.323	32	6.291	1.857	1.411	1.377	500	303	194	132	95	56	55	44	8	30	23	21	17	9	17	14	8	6	11	17	3	20	4	11	8	5	5	6	6	3	2	2	4	4	2	0	1			
64	Samtgemeinde Grasleben																																														
64	01 - Grasleben, SG-Verw.	427	5	422	130	91	65	64	20	16	8	5	3	1	2	3	6	1	1	1	0	0	2	0	1	0	1	0	0	0	0	0	0	0	0	0	0	0	0	0	0	0	0	0	0	0	0
65	02 - Grasleben, Grundschule	465	4	461	153	89	61	49	28	17	13	12	10	5	3	0	5	2	2	1	2	2	1	3	0	2	0	0	0	1	0	0	0	0	0	0	0	0	0	0	0	0	0	0	0	0	0
	Gem. Grasleben	892	9	883	283	180	126	113	48	33	21	17	13	6	5	3	11	3	3	2	2	3	3	1	2	1	0	0	2	0	0	0	0	0	0	0	0	0	0	0	0	0	0	0	0	0	0
66	03 - Querenhorst	197	0	197	76	55	14	13	7	3	6	9	1	1	3	2	2	0	1	0	0	0	0	0	0	0	0	0	0	0	0	0	0	0	0	0	0	0	0	0	0	0	0	0	0	0	0
	Gem. Querenhorst	197	0	197	76	55	14	13	7	3	6	9	1	1	3	2	2	0	1	0	0	0	0	0	0	0	0	0	0	0	0	0	0	0	0	0	0	0	0	0	0	0	0	0	0	0	0
67	04 - Mariental	313	2	311	101	69	39	23	16	10	8	10	8	5	1	1	2	2	2	5	0	1	2	0	1	0	0	2	1	0	0	0	0	0	0	0	0	0	0	0	0	0	0	0	0	0	
	Gem. Mariental	313	2	311	101	69	39	23	16	10	8	10	8	5	1	1	2	2	2	5	0	1	2	0	1	0	0	2	1	0	0	0	0	0	0	0	0	0	0	0	0	0	0	0	0	0	0
68	05 - Rennau-Ahmstorf	108	1	107	32	19	26	12	5	3	1	3	0	1	1	0	0	0	0	1	1	1	0	1	0	0	0	0	0	0	0	0	0	0	0	0	0	0	0	0	0	0	0	0	0	0	
69	06 - Rennau	114	0	114	42	15	13	10	13	4	4	3	0	1	1	2	0	0	1	0	1	0	1	0	0	0	0	0	2	0	0	0	0	0	0	0	0	0	0	0	0	0	0	0	0	0	0
70	07 - Rennau-Rottorf	131	0	131	63	31	13	9	4	1	0	3	0	0	2	0	1	1	0	2	0	0	0	0	1	0	0	0	0	0	0	0	0	0	0	0	0	0	0	0	0	0	0	0	0	0	
	Gem. Rennau	353	1	352	137	65	52	31	22	8	5	9	0	2	4	2	1	1	1	3	2	1	1	1	1	0	0	2	0	0	0	0	0	0	0	0	0	0	0	0	0	0	0	0	0	0	
	Zwischensumme Samtgemeinde Grasleben	1.755	12	1.743	597	369	231	180	93	54	40	45	22	14																																	

		insgesamt	ungültig	gültig	CDU	SPD	GRÜNE	AID	FDP	DIE LINKE	Die PARTEI	Tierschutz-partei	FAMILIE	PIRATEN	FREIE WÄHLER	NPD	ÖDP	Volt	TIER-SCHUTZ hier!	Graue Panther	PARTEI FÜR DIE TIERE	Demokratie in Europa	Gesundheits-forschung	Tierschutz-allianz	Die Grauen	LKR	Volksab-stimmung	Die Huma-nisten	Bündnis C	DIE FRAUEN	BP	LIEBE	BGE	BIG	ÖkoLinX	MENSCH-LICHE WELT	DIE RECHTE	DIE DIREKTE!	DKP	NL	DIE VIO-LETTEN	MLPD	SGP	III. Weg					
	Nr. / Name	B	C	D	D 1	D 2	D 3	D 4	D 6	D 5	D 10	D 8	D 11	D 7	D 12	D 9	D 14	D 40	D 19	D 32	D 38	D 25	D 39	D 20	D 27	D 33	D 13	D 37	D 21	D 31	D 16	D 30	D 23	D 22	D 36	D 34	D 28	D 24	D 15	D 35	D 29	D 17	D 18	D 26					
93	Samtgemeinde Heeseberg																																																
	001 - Beierstedt	138	0	138	44	34	28	9	4	3	4	3	1	0	1	0	0	0	1	0	1	1	1	0	0	0	0	1	0	0	2	0	0	0	0	0	0	0	0	0	0	0	0	0	0	0	0		
	Gem. Beierstedt	138	0	138	44	34	28	9	4	3	4	3	1	0	1	0	0	0	1	0	1	1	1	0	0	0	0	1	0	0	2	0	0	0	0	0	0	0	0	0	0	0	0	0	0	0	0		
94	005 - Gevensleben	261	3	258	68	69	48	20	17	10	6	2	2	1	3	2	2	0	0	0	0	1	3	0	1	0	0	0	0	1	0	0	1	0	0	0	0	0	0	0	0	0	0	0	0	0	0		
	Gem. Gevensleben	261	3	258	68	69	48	20	17	10	6	2	2	1	3	2	2	0	0	0	0	1	3	0	1	0	0	0	0	1	0	0	1	0	0	0	0	0	0	0	0	0	0	0	0	0	0	0	
95	015 - Jerxheim	403	3	400	135	113	50	32	18	14	3	8	2	1	2	1	1	0	3	1	4	2	1	2	0	2	0	0	2	0	0	0	1	0	0	0	0	0	2	0	0	0	0	0	0	0	0		
	Gem. Jerxheim	403	3	400	135	113	50	32	18	14	3	8	2	1	2	1	1	0	3	1	4	2	1	2	0	2	0	0	2	0	0	0	1	0	0	0	0	0	2	0	0	0	0	0	0	0	0	0	
96	020 - Söllingen	508	0	508	148	146	70	59	21	18	8	14	2	3	2	1	1	0	3	3	3	0	0	1	0	1	1	1	1	0	0	0	0	0	0	1	0	1	0	0	0	0	0	0	0	0	0		
	Gem. Söllingen	508	0	508	148	146	70	59	21	18	8	14	2	3	2	1	1	0	3	3	3	0	0	1	0	1	1	1	0	0	0	0	0	0	0	1	0	1	0	0	0	0	0	0	0	0	0	0	
	Zwischensumme Samtgemeinde Heeseberg	1.310	6	1.304	395	362	196	120	60	45	21	27	7	5	8	4	4	0	7	4	8	4	5	3	1	3	2	1	2	3	0	0	2	0	1	0	3	1	0	0	0	0	0	0	0	0	0		
97	Briefwahl 910 (WB 001-020)	381	3	378	120	118	49	30	23	7	2	10	1	0	5	3	0	1	1	2	1	0	1	0	1	0	1	0	0	0	0	0	0	0	0	1	0	0	0	0	0	0	0	0	0	0	0		
	Zwischensumme Briefwahl Samtgem. Heeseberg	381	3	378	120	118	49	30	23	7	2	10	1	0	5	3	0	1	1	2	1	0	1	0	1	0	1	0	0	0	0	0	0	0	0	1	0	0	0	0	0	0	0	0	0	0	0		
	Summe Samtgemeinde Heeseberg	1.691	9	1.682	515	480	245	150	83	52	23	37	8	5	13	7	5	1	8	6	9	4	6	3	2	3	3	1	2	3	0	0	2	0	2	0	3	1	0	0	0	0	0	0	0	0			
98	Samtgemeinde Nord-Elm																																																
	001 - Frellstedt	332	4	328	87	94	58	21	16	16	4	4	3	2	4	7	5	0	0	1	1	2	1	0	0	0	0	0	0	0	0	0	0	0	0	0	0	0	0	0	0	0	0	0	0	0	0		
	Gem. Frellstedt	332	4	328	87	94	58	21	16	16	4	4	3	2	4	7	5	0	0	1	1	2	1	0	0	0	0	0	0	0	0	0	0	0	0	0	0	0	0	0	0	0	0	0	0	0	0	0	0
99	002 - Rübke	308	1	307	108	63	60	24	18	1	6	8	4	1	0	4	0	1	5	1	0	1	0	0	0	0	0	0	0	0	0	0	0	0	0	0	0	0	0	0	0	0	0	0	0	0	0	0	
	Gem. Rübke	308	1	307	108	63	60	24	18	1	6	8	4	1	0	4	0	1	5	1	0	1	0	0	0	0	0	0	0	0	0	0	0	0	0	0	0	0	0	0	0	0	0	0	0	0	0	0	0
100	003 - Süplingen	322	2	320	84	74	49	32	27	14	5	10	6	4	7	2	0	0	0	0	0	0	1	1	0	0	1	0	1	0	0	0	0	0	0	0	0	0	0	0	0	0	0	0	0	0	0	0	
	Gem. Süplingen	322	2	320	84	74	49	32	27	14	5	10	6	4	7	2	0	0	0	0	0	0	1	1	0	0	1	0	1	0	0	0	0	0	0	0	0	0	0	0	0	0	0	0	0	0	0	0	
101	004 - Süplingen	263	3	260	70	60	41	32	15	6	9	3	2	1	0	10	1	2	1	1	0	0	1	0	1	0	0	0	0	0	0	0	0	0	0	0	0	0	0	0	0	0	0	0	0	0	0	0	
	Gem. Süplingen	263	3	260	70	60	41	32	15	6	9	3	2	1	0	10	1	2	1	1	0	0	1	0	1	0	0	0	0	0	0	0	0	0	0	0	0	0	0	0	0	0	0	0	0	0	0	0	0
102	005 - Süplingenburg	297	1	296	81	81	45	21	13	12	9	6	1	3	4	8	5	0	0	0	0	0	1	0	2	0	0	0	2	0	0	0	0	0	0	0	0	0	0	0	0	0	0	0	0	0	0	0	
	Gem. Süplingenburg	297	1	296	81	81	45	21	13	12	9	6	1	3	4	8	5	0	0	0	0	0	1	0	2	0	0	0	2	0	0	0	0	0	0	0	0	0	0	0	0	0	0	0	0	0	0	0	
103	006 - Warberg	342	4	338	131	68	55	29	16	8	3	5	2	2	4	3	0	2	2	2	0	1	0	1	2	0	0	0	0	0	0	0	0	0	0	0	0	0	0	0	0	0	0	0	0	0	0	0	
	Gem. Warberg	342	4	338	131	68	55	29	16	8	3	5	2	2	4	3	0	2	2	2	0	1	0	1	2	0	0	0	0	0	0	0	0	0	0	0	0	0	0	0	0	0	0	0	0	0	0	0	
104	007 - Wolsdorf	356	6	350	101	93	37	54	12	13	5	8	4	0	2	3	1	3	1	4	2	1	1	2	0	1	0	1	0	0	1	0	0	0	0	0	0	0	0	0	0	0	0	0	0	0	0	0	
	Gem. Wolsdorf	356	6	350	101	93	37	54	12	13	5	8	4	0	2	3	1	3	1	4	2	1	1	2	0	1	0	1	0	0	1	0	0	0	0	0	0	0	0	0	0	0	0	0	0	0	0	0	
	Zwischensumme Samtgemeinde Nord-Elm	2.220	21	2.199	662	533	345	213	117	70	41	44	22	13	14	42	14	8	9	9	3	5	5	4	5	1	1	3	1	0	1	2	2	0	3	1	1	2	0	1	0	1	0	1	1	0			
105	Briefwahl 870 (WB 001-007)	634	2	632	238	161	79	62	30	11	2	15	3	3	5	4	2	0	3	4	0	2	0	3	1	1	0	0	1	2	0	0	0	0	0	0	0	0	0	0	0	0	0	0	0	0	0		
	Zwischensumme Briefwahl Samtgem. Nord-Elm	634	2	632	238	161	79	62	30	11	2	15	3	3	5	4	2	0	3	4	0	2	0	3	1	1	0	0	1	2	0	0	0	0	0	0	0	0	0	0	0	0	0	0	0	0	0		
	Summe Samtgemeinde Nord-Elm	2.854	23	2.831	900	694	424	275	147	81	43	59	25	16	19	46	16	8	12	13	3	7	5	4	8	2	2	3	1	1	3	2	2	0	3	1	1	2	0	1	0	1	0	1					